



Campus Physical Planning Committee

April 17, 2014
KL 232
3 pm - 5 pm

1. Call to Order

Business Items

2. Approval of Minutes

Discussion Items

3. 2020 Project Update
4. Storage Container Facility Selection Criteria

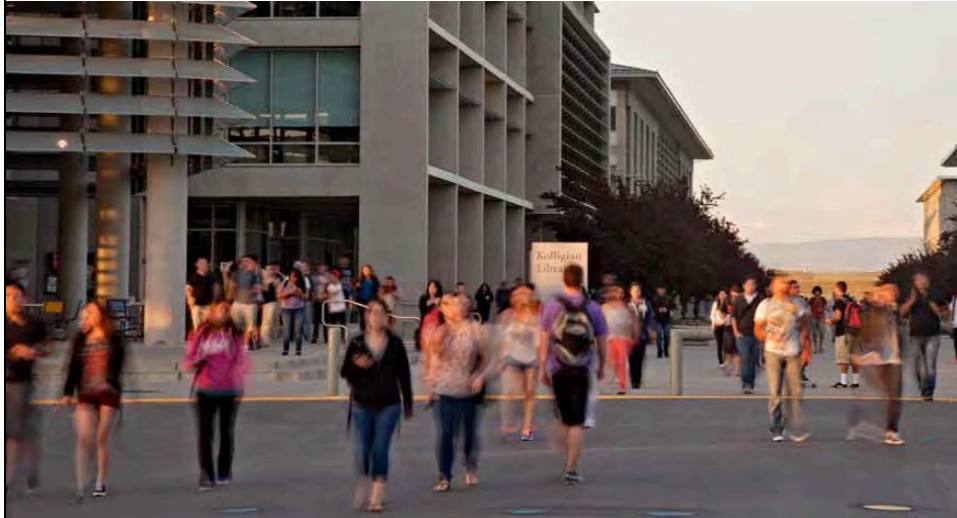
Consent Item

5. Central Plant Reliability Upgrade
6. Recreation and Athletics Field Improvements

Reports

7. Report from the Department of Design and Construction
8. Report from the Department of Physical and Environmental Planning

2020 Project Update



Storage Container Facility Selection Criteria

Demand for storage facilities increasing campuswide



Tables and
equipment storage



Audio/Visual
Equipment
storage



ATV and research
equipment storage

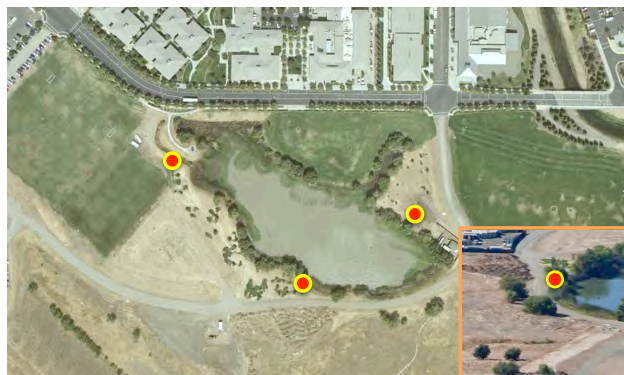
Example of Site request that would not trigger CPPC review



5

Site request that would trigger CPPC review

Conflict with open space



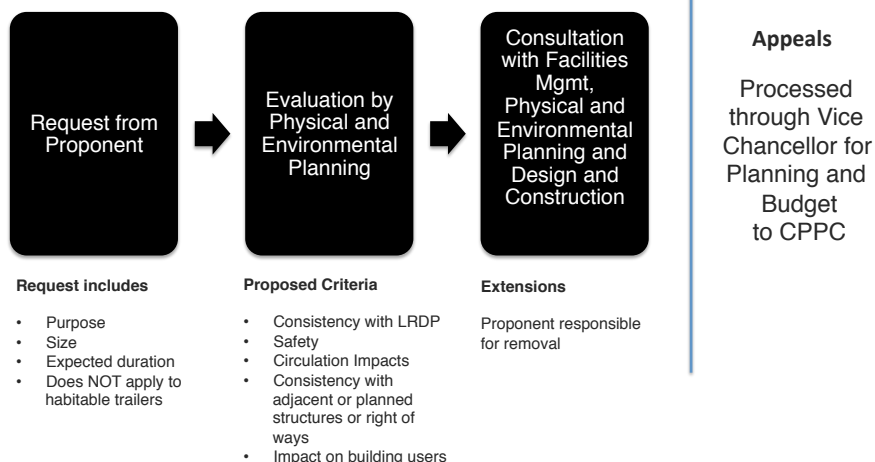
Aerial View

Perspective View



4/18/14

Storage Container Facility Selection Criteria



Consent Item: Central Plant/Telecom Reliability Upgrade

April 2016 Completion

Currently in the Design Development Phase

Will seek UCOP approval to start Working Drawings in early May 2014



Consent Item: Recreation and Athletics Field Improvements



- Turf Repair
- Fencing
- Scoreboard

Consent Item: Central Plant/Telecom Reliability Upgrade

April 2016 Completion

Currently in the Design Development Phase

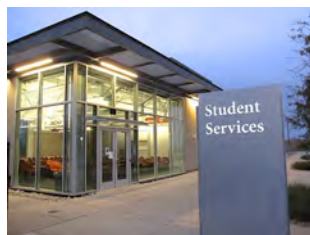
Will seek UCOP approval to start Working Drawings in early May 2014





Student Services Building Complete

3-Story building opened for Spring Classes: January 21, 2014
Pavilion previously opened for Fall Classes: August 29, 2013



- **2nd Floor:** Center for Career and Professional Advancement, Ombuds Office and Disability Services moved into space January 16, 2014
- **3rd Floor:** Two Academic Support rooms that will be in part used for tutorial services
- **3rd Floor:** Tenant improvements being designed for Graduate Division and Undergraduate Education offices



Site Development and Infrastructure

Phase 4: 100% Complete



Little Lake Amphitheater

“Wallace-Dutra Amphitheater Celebrating the Class of 2009’s Vision”

- Temporary Certificate of Occupancy April 9
- Events are planned for April 2014
- Electrical Punch List remaining



Science and Engineering 2

August 2014 Completion



Classroom Office Building 2

April 2016 Completion

- Original bid opening March 18, 2014
- Rebid of 4 bid packages April 15, 2014
- Break Ground Mid May 2014



Central Plant/Telecom Reliability Upgrade

April 2016 Completion

Currently in the Design Development Phase

Will seek UCOP approval to start Working Drawings in early May 2014



Transportation Planning Update

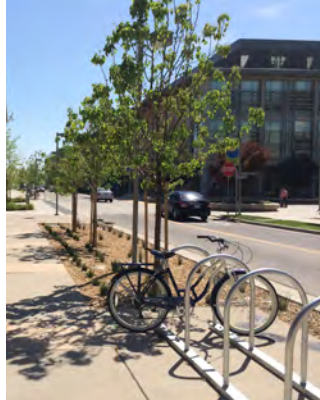
On-campus



Off-campus



Transportation Planning Update Upcoming On-Campus Study Focus



Ansel Adams Road



Ranchers Road

Off-campus Transportation Study

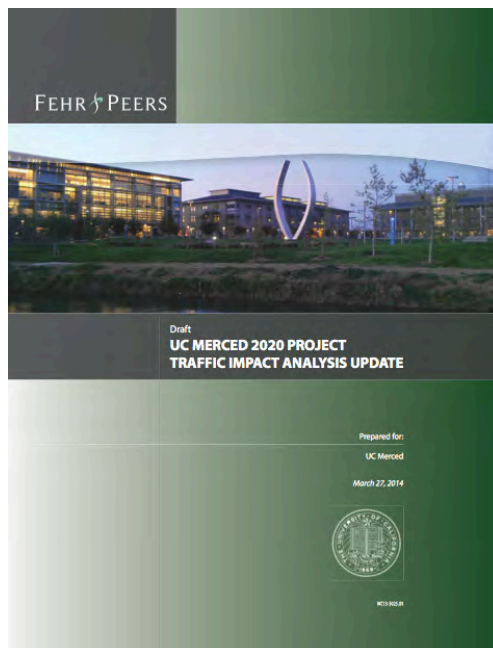
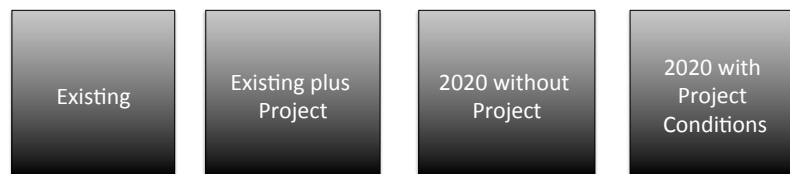


- Updates data for 2020 Project
- 18 intersections analyzed
- 3 are new and were recommended by City and County

Off-campus Traffic Study Four Scenarios Considered

- Transportation Research Board 2010 Highway Capacity Manual Methodology used

Four Analysis Scenarios



UC Merced 2020 Project Traffic Impact Analysis Update

- Document circulated to City and County for comments
- Expecting feedback within a week
- Continuing bi-weekly meetings

Campus Design Context Overview



- Informational Document
- Provides site and design context
- Overview of opportunities for connection

<http://2020project.ucmerced.edu/resources/design-context>

Barn Restoration



- Collaboration with University Development and Alumni Relations and Sierra Nevada Research Institute
- Pursuing collaborative opportunities with Vernal Pool Interpretive Center
- Next Step: Feasibility Study

2001 Historical Survey of Barn Identified



- Built in 1913
- Type: Typical Midwest-style three portal barn
- Landowners Elmer, Virginia and Cyril Smith were all UC graduates
- Built by Smith Family tenants with an adjacent house but never used by the Smith Family
- Captures agricultural heritage of the site but does not meet criteria for National or State Register of Historic Places