

## **Campus Physical Planning Committee**

July 10, 2014  
KL 232  
3 pm - 4 pm



## **Agenda**

1. Call to Order

### **Business Items**

2. Approval of Minutes

3. 2020 Project Update

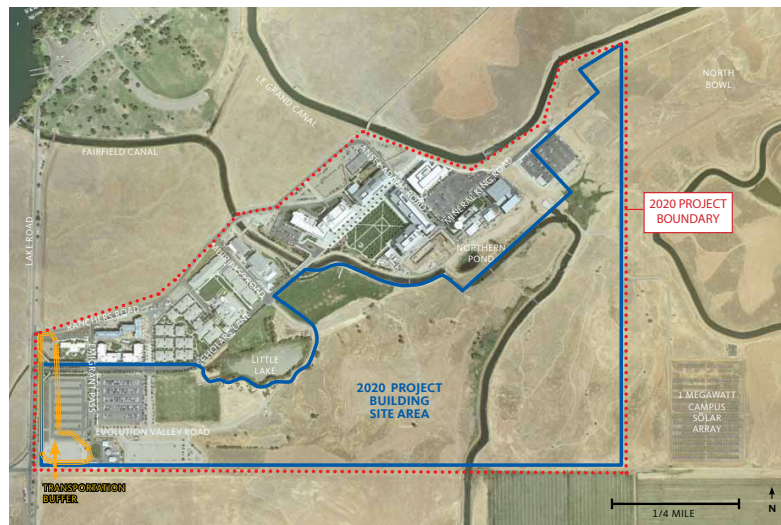
### **Committee Reports**

4. Design and Construction Program Updates



## 2020 Project Background

A mixed-use campus for 10,000 students



## 2020 Project RFQ Released in April

### Responses from teams imminent

- **Request for Qualifications** released on April 17, 2014
- **Two Addendums issued**
  - May 28, 2014 (#1)
  - July 3, 2014 (#2)
- **70 questions** have been answered in response to inquiries
- **Responses are due** July 28, 2014, 4 p.m.
- Campus will select 3 to 5 eligible teams

THE REGENTS OF THE UNIVERSITY OF CALIFORNIA  
 REQUEST FOR QUALIFICATIONS  
 (No. UCM20200414)  
 COMPREHENSIVE DEVELOPMENT OF THE  
 UC MERCED 2020 PROJECT

ISSUE DATE: APRIL 17, 2014  
 ADDENDUM NO. 1: MAY 28, 2014  
[ADDENDUM NO. 2: JULY 3, 2014](#)

SOQ DUE DATE: JULY ~~28~~<sup>17</sup>, 4:00 P.M. PDT

## 2020 Project Next Steps

### “RFQ” will be followed by “RFP”

#### Stage 1 Request for Qualifications

**April 2014**  
RFQ Released

**July 28, 2014**  
RFQ Due

**October 2014**  
Shortlist 3 to 5  
development teams

**November 2014**  
Brief Regents

#### Stage 2 Request for Proposals

**December 2014**  
Invite proposals from  
shortlisted teams

**2<sup>nd</sup> Quarter 2015**  
Pre-qualified teams  
submit proposals

**3<sup>rd</sup> Quarter 2015**  
Initiate negotiations  
with selected team

#### Stage 3 Design and Construction

**3<sup>rd</sup>/4<sup>th</sup> Quarter 2017**  
Delivery of initial  
development

**2020-21**  
Delivery of final phase

## 2020 Team is currently developing the “Request for Proposals” (RFP)

### 2020 Team



### RFP will include

- 2020 Project Program and Performance Specifications
  - Urban Design
  - IT
  - Infrastructure
  - Buildings and FF&E
  - Operations/Maintenance
- Commercial Contract
- Submittal Requirements

## Program Development underway to inform RFP

- 2020 Team is working with stakeholders
- “High water” mark requests have been tabulated

	ASF	GSF
<b>Total Built Area</b>	<b>1,086,464</b>	<b>1,713,111</b>
Academic Space	419,212	698,686
Housing & Student Dining	400,992	589,694
Academic Support	164,740	257,646
Recreation and Athletics	101,520	167,085

- Program is ‘high water mark’ and includes total requests from all groups
- Budget and Revenue alignment to be undertaken in July
- Opportunities for shared use and shared use to be evaluated in July
- Program commitment will be Assignable Square Feet (ASF)

## 2020 Program Detail Academic and Housing

	ASF	GSF
<b>Academic Space</b>	<b>419,212</b>	<b>698,686</b>
Laboratory	296,402	494,003
Office	46,960	78,267
Classroom	53,850	89,750
Scholarly Activities/Interaction	8,000	13,333
Performance Space	14,000	23,333

	ASF	GSF
<b>Housing &amp; Student Dining</b>	<b>400,992</b>	<b>589,694</b>
Housing	371,715	546,640
Dining Services (1,896) Beds	27,985	43,054

## 2020 Program Detail Academic Support and Recreation/Athletics

	ASF	GSF
<b>Academic Support</b>	<b>164,740</b>	<b>257,646</b>
Administration	2,500	3,571
Enrollment Services	32,610	50,169
Information technology		
Development and Alumni Relations	12,070	18,569
Student Health Services	16,110	24,785
Student Life & Activities	66,840	111,400
Early Childhood Ed.Center	3,060	4,080
Campus Operations	31,550	45,072

	ASF	GSF
<b>Athletics and Recreation Buildings</b>	<b>101,520</b>	<b>167,085</b>
Aquatics Center	9,850	15,154
Athletics and Recreation Center	85,020	141,700
Athletics Field Building	6,650	10,231
Fields		
Competition Pool		11,500
Competition Athletic Field		100,000
Recreation Field		250,000
Courts (Tennis/Volleyball/Basketball - 10 total)		42,000



## Upcoming work

- Reconcile Program and Budget
- Operations and Management Details
- Alignment with Physical Framework team and Legal on nature of performance specifications
- Determine primary program elements
- Reconcile review and approval process

## Construction Updates



## Science and Engineering 2

August 2014 Completion



## Classroom Office Building 2

April 2016 Completion

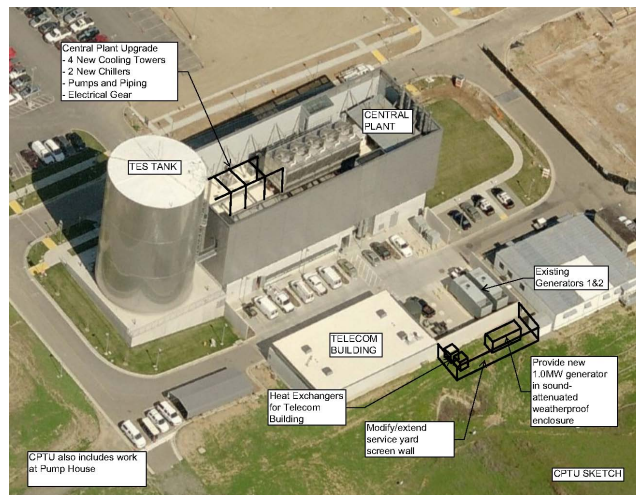
- Contract Award Approval & Release of Construction Funds April 24, 2014
- Notice to Proceed May 6, 2014
- Site Mobilization & Set Up Commenced May 19, 2014
- Initial Construction Focused on Excavation & Site Utilities
- Foundation Work Scheduled Mid-July Through Mid-September



## Central Plant/Telecom Reliability Upgrade

April 2016 Completion

Construction Documents 50% Complete



## Next CPPC Meeting

August 14, 2014  
KL 232  
3 pm - 5 pm

